



1.) Rainshower 310 (330-1-260427)

Category: 1.16 Bathroom

Shower system

Rainshower 310 SmartActive Digital is a beautiful and minimalist shower system that takes consumers on the first step towards digital interaction in showering. The sleek digital controller is simple to use; once the function is activated the user receives sensory feedback. With this digital control solution, the consumer can always adjust their shower system, adding various benefits such as diverting the shower head sprays via the digital controller. Because the controller is not mechanically linked to in-wall plumbing, it can be placed anywhere within the shower cubicle.

Design agency

Grohe AG
Düsseldorf, Germany

Client / Manufacturer

Grohe AG
Düsseldorf, Germany Düsseldorf, Germany

Logistics-Return-shipping

Grohe AG
Düsseldorf, Germany

2.) Atrio 3-hole wall mount (330-1-260421)

Category: 1.16 Bathroom

Bathroom faucet

Atrio is a design with two faces - elegance and precision. The entire design of Atrio is based on pure geometry - the perfect circle. From the rosettes to the handles and spout, each element of the Atrio range is designed using a perfect circular element. Because of the softness of the circle, one aspect of Atrio has a feminine expression, perfectly elegant yet strongly poised. The other aspect is represented by the perfection of cylindrical forms that intersect precisely and proportionately. The new Atrio is an icon of contemporary design

Design agency

Grohe AG
Düsseldorf, Germany

Client / Manufacturer

Grohe AG
Düsseldorf, Germany Düsseldorf, Germany

Logistics-Return-shipping

Grohe AG
Düsseldorf, Germany





3.) Atrio 3-hole deck mount (330-1-260410)

Category: 1.16 Bathroom

Bathroom faucet

Atrio is a design with two faces - elegance and precision. The entire design of Atrio is based on pure geometry - the perfect circle. From the rosettes to the handles and spout, each element of the Atrio range is designed using a perfect circular element. Because of the softness of the circle, one aspect of Atrio has a feminine expression, perfectly elegant yet strongly poised. The other aspect is represented by the perfection of cylindrical forms that intersect precisely and proportionately. The new Atrio is an icon of contemporary design

Design agency

Grohe AG
Düsseldorf, Germany

Client / Manufacturer

Grohe AG
Düsseldorf, Germany Düsseldorf, Germany

Logistics-Return-shipping

Grohe AG
Düsseldorf, Germany



4.) Euphoria Spa Colours Chrome (330-1-260407)

Category: 1.16 Bathroom

Shower fittings

The premium GROHE Spa Colours fittings series allow customers to choose from a variety of five luxurious colors and two finishes - polished and brushed. Effectively, this means a choice of 10 premium colors and finishes, which have been carefully selected based on global color, material and finish trends. The superior surface quality and strengths of modern PVD technology make these colors more durable than ever. All faucets are highly resistant to abrasion and resilient to hard knocks.

Design agency

Grohe AG
Düsseldorf, Germany

Client / Manufacturer

Grohe AG
Düsseldorf, Germany Düsseldorf, Germany

Logistics-Return-shipping

Grohe AG
Düsseldorf, Germany



5.) Euphoria Spa Colours Hard Graphite (330-1-260404)

Category: 1.16 Bathroom

Shower fittings

The premium GROHE Spa Colours fittings series allow customers to choose from a variety of five luxurious colors and two finishes - polished and brushed. Effectively, this means a choice of 10 premium colors and finishes, which have been carefully selected based on global color, material and finish trends. The superior surface quality and strengths of modern PVD technology make these colors more durable than ever. All faucets are highly resistant to abrasion and resilient to hard knocks.

Design agency

Grohe AG
Düsseldorf, Germany

Client / Manufacturer

Grohe AG
Düsseldorf, Germany Düsseldorf, Germany

Logistics-Return-shipping

Grohe AG
Düsseldorf, Germany



6.) SPIN by HAMMAM DESIGN RADIATOR (330-1-260269)

Category: 1.16 Bathroom

Towel warmer

SPIN provides a perfect combination of minimalist design, a high degree of functionality and ease of use for the consumer. It has smooth bars with a well-rounded frame and a brushed and polished finish. SPIN presents a combination of modernity and simplicity with functional design for the use of large towels. The wall mounting brackets are designed to enhance the practical use of space. During production of SPIN, high processing technology is combined with know-how, experience and the art of shaping steel. Because it is made of completely recyclable stainless steel, Spin contributes to a more sustainable world.

Design agency

RADIM RADYATOR SAN.VE TIC. LTD. STI
Oguzhan Cellat, Elif Selek, Server Konrat
Eskisehir, Turkey

Client / Manufacturer

RADIM RADYATOR SAN.VE TIC. LTD. STI
Istanbul, Turkey Eskisehir, Turkey

Logistics-Return-shipping

Radim Radyatör LTD.STI
Eskisehir, Turkey



7.) Koralle SL410 (330-1-260218)

Category: 1.16 Bathroom

Shower partition

The shower partition series Koralle SL410 stands out thanks to innovative design and a wide range of models. The minimalist aesthetic language, strengthened by straight lines and narrow profiles, creates a formidable, timeless and naturally elegant impression. The pendular and folding door series consists of 15 models and 7 sizes as corner, folding, folding corner, quadrant, bathtub or walk-in solutions. Even U-combinations, rows and custom-made models are possible.

Design agency

nexus product design GbR
Bielefeld, Germany

Client / Manufacturer

Koralle Sanitärprodukte GmbH
Vlotho, Germany Vlotho, Germany

Logistics-Return-shipping

Koralle Sanitärprodukte GmbH
Vlotho, Germany



8.) SteamFIT (330-1-260129)

Category: 1.16 Bathroom

Compact steam shower

The space-saving SteamFIT elegantly combines shower and steam bath. The modular cabin not only delivers in terms of design, as each is made to measure and can be individually equipped but also provides a number of functional benefits. The floating bench behind the generous glass front and the use of seamless, easy-care solid surface material offer many advantages for comfort and cleaning. As does the hidden technology behind a press-open drawer that seamlessly fits the design. Outfitted with light, audio or aroma systems, the steam shower offers a multi-sensory experience and transforms any bathroom into a micro-spa.

Design agency

Küng Sauna & Spa AG
Altendorf, Switzerland

Client / Manufacturer

Domovari GmbH
Krefeld, Germany Altendorf, Switzerland



9.) D6 sense Deep Intelligence Smart toilet (330-1-259996)

Category: 1.16 Bathroom

Smart toilet

This product redefines the "smart" toilet. Thanks to breakthrough intelligent voice function, precise centimeter phase-controlled microwave induction, and ingenious fingerprint identification system, users can easily customize the water temperature, water pressure, seat temperature, drying temperature, spray position, etc. The innovative independent hydraulic control system is free from external water pressure and solves the problem of low water pressure on high floors.

Design agency

HANGZHOU LPZ INDUSTRIAL DESIGN Co., Ltd.
Hangzhou, China

Client / Manufacturer

Zhejiang Yihe Sanitary Ware Co., Lt
taizhou, China Zhe Jiang, China



10.) WATERFOIL (330-1-259893)

Category: 1.16 Bathroom

Wash basin

Waterfoil is an innovative solution for handwashing in public restrooms, with faucet, soap dispenser and dryer completely integrated into the sink. It mimics the sensation of water flowing in nature. As the basin appears to be full of water without actually filling, it feels like dipping your hands into a river. Soap rides on the water over your hands, and finally, air streaming from the surround-hand dryer envelops your hands. Because the entire hand-washing process takes place within the basin, the surrounding area stays clean, dry and safe. Waterfoil brings ultimate functionality and cleanliness to the restroom.

Design agency

Kohler Design Studio
HIRO CHUNG
Shanghai, China

Client / Manufacturer

Kohler Co.
Shanghai, China Shanghai, China



11.) Rainfinity Produktfamilie (330-1-259751)

Category: 1.16 Bathroom

Bathroom fitting

With its product family Rainfinity, which includes shower pipes, fixed overhead showers, and hand showers, Hansgrohe have developed a new shower experience. The angled positioning of the overhead shower does not require a "classic" shower arm and provides a new way of showering. When showering, your body is enveloped from head to toe in a refreshing spray, which Hansgrohe call PowderRain, without necessarily wetting the face and hair. The clear and reduced forms allow perfect integration into a modern home. The matt and discreetly textured surfaces offer pleasant haptics while the curved shape of the jet disc creates an accessible and warm feeling.

Design agency

Phoenix Design GmbH & Co. KG
Stuttgart, Germany

Client / Manufacturer

Hansgrohe SE
Schiltach, Germany Schiltach, Germany

Logistics-Return-shipping

Hansgrohe SE
Schiltach, Germany



12.) Croma E 280 Showerpipe (330-1-259749)

Category: 1.16 Bathroom

Shower fitting

Croma E 280 Showerpipe is impressive in many respects. The striking feature is, of course, the large head shower with its SoftCube design. The gently rounded edges fit a variety of bathroom styles and harmonize with both rounded as well as angular bathroom elements. In addition, the Croma E 280 Showerpipe turns each showering experience into a fun event thanks to the extremely soft RainAir spray. The hand shower with the three spray modes, SoftRain, IntenseRain, and Massage allows you to enjoy individualized showering moments.

Design agency

Phoenix Design GmbH & Co. KG
Stuttgart, Germany

Client / Manufacturer

Hansgrohe SE
Schiltach, Germany Schiltach, Germany

Logistics-Return-shipping

Hansgrohe SE
Schiltach, Germany



13.) Solo (330-1-259683)

Category: 1.16 Bathroom

Bathtub and wash basin

The Solo free-standing bathtub combines the visual stability of a rectangular base with an oval upper section. Its minimalist look makes the tub the focal point of any bathroom - not only because of its independence from the remaining space, but also and in particular thanks to its purist style. The shape of the bathtub is replicated in the washbasin made of cast marble, creating an aesthetically balanced and unified whole.

Design agency

Nosal Design Studio
Krystof Nosal
Cernosice, Czechia

Client / Manufacturer

RAVAK a. s.
Přibram, Czechia Přibram, Czechia

Logistics-Return-shipping

Ravak a.s.
Přibram, Czechia



14.) Doux Collection (330-1-259682)

Category: 1.16 Bathroom

Bathroom fixtures

The Doux Collection is new family of modern bathroom fixtures and accessories. Each piece begins as a gently arcing cylinder that is then precisely sliced down the center to reveal a soft "D" shaped spout. A flat thin water presentation was carefully designed to continue the spout's clean lines. This "D" shape is then reflected in the handle and liftrod details. The asymmetrical handle invites the user to engage with the product, while adding a distinctive design element that is preserved throughout each piece. Graceful flared bases and a luxurious matte black finish refine the collection creating an elegant yet approachable water experience.

Design agency

Moen
Jessica Birchfield, Chris Gilbert, Jen Sedwick, TJ Manion
North Olmsted, United States

Client / Manufacturer

Moen
North Olmsted, United States North Olmsted, United States

Logistics-Return-shipping

Moen
North Olmsted, United States

AORI (330-1-259680)



AORI (330-1-259680)



15.) AORI (330-1-259680)

Category: 1.16 Bathroom

Wash basin faucet

AORI maximizes square and round, two geometric elements, to evoke visual enjoyment. It comes with modern lines in ergonomic design following numerous tests for user convenience. The designers ingeniously changed the water outlet from traditional stream to spray-like raindrops. So users feel like they are massaging their hands with raindrops. This approach also saves water! AORI gives you a humanized bathroom experience rather than an industrial product.

Design agency

Bravat (China) GmbH
Zou Jiahuan, Li Baogou, Xie Xing,
Guangzhou, China

Client / Manufacturer

Bravat (China) GmbH
Guangzhou, China Guangzhou, China

Logistics-Return-shipping

Bravat (China) GmbH
Guangzhou, China



16.) Naiad (330-1-259594)

Category: 1.16 Bathroom

Shower fitting

Naiad is a multi-function shower head that is designed for water filtering and easy cleaning. The shower handle knob can be toggled to switch between three different water outlet modes. The handle contains a separate integrated disposable filter element. The transparent strip window on the back allows the user to easily view the color change of the filter element, so they know when to replace it. The filter can be easily removed just by rotating the handle. For ease of cleaning, the interior of the shower head has a new ejector pin structure. Just press a button on the back of the head and pins are pushed through the shower nozzle holes to clean the scale and remove any blockages.

Design agency

Shijiazhuang Yiqi Technology Co., Ltd.
Chen Liqing, Cai Zengyi, Zhang Mi, Guo Zhenliu, Lin Kai, Zhong Weilun, Huang Kunsong
Shijiazhuang, China Jinjiang Yiqi Technology Co., Ltd
Jinjiang, China

Client / Manufacturer

Guangdong Lehua Intelligent Sanitary Ware Co., Ltd.
Foshan, China FOSHAN, China

Logistics-Return-shipping

GUANG DONG LEHUA INTELLIGENT
FOSHAN, China



17.) Sachi (330-1-259582)

Category: 1.16 Bathroom

Faucet

Sachi is a basin faucet with soft yet dynamic geometric forms. The rounded and ultra-thin handle offers users a comfortable grip. The unique two-function water spout, which can switch between flow and spray, enriches the user experience. The top switch button reduces flow to save water.

Design agency

Shijiazhuang Yiqi Technology Co., Ltd.
Liu Yibing, Lin Jie, Lin Kai, Cai Zengyi, Xu Lujiang
Shijiazhuang, China Jinjiang Yiqi Technology Co., Ltd
Jinjiang, China

Client / Manufacturer

Guangdong Lehua Intelligent Sanitary Ware Co., Ltd.
Foshan, China FOSHAN, China

Logistics-Return-shipping

GUANG DONG LEHUA INTELLIGENT
FOSHAN, China



18.) BATHROOM STEWARD II (330-1-259578)

Category: 1.16 Bathroom

Bathroom heater

This hybrid device is a heater and an air purifier. Thanks to its newly patented wind tunnel and air-care system, it effectively heats up the bathroom while also rapidly purifying the air. Based on research, BS II is designed with three remarkable features: the white glass surface is flush to the ceiling and matches the bathroom interior; for humid bathrooms, BS II doesn't just heat, but also purifies the air; and, matched to circadian rhythms, it provides optimal lighting at different times the time of day. Enabled with intelligent technology, it takes the bathroom experience to a whole new level.

Design agency

Kohler Design Studio
Shanghai, China

Client / Manufacturer

Kohler Co.
Shanghai, China Shanghai, China



19.) PurityS Siphonic Wall Hung Toilet (330-1-259423)

Category: 1.16 Bathroom

Toilet

The PurityS Siphonic Wall-Hung is a system that combines a wall-hung ceramic toilet bowl with a concealed cistern. Its siphonic architecture avoids water splashing back to users, while its patented turbo flush siphon has more suction power than similar products. It also consumes 30% less water and reduces noise by 50%. Its wall-hung configuration simplifies toilet installation and facilitates bathroom cleaning, being also seats and lids easy to install. The PurityS lines create a dynamic look that is targeted at the urban population of South Korea and China. Moreover, customers can choose the cover plates' color according to their preferences.

Design agency

WILDDDESIGN SHANGHAI CO. LTD.
Alejandro Lara, Junyong Youn
Shanghai, China Geberit Shanghai Investment
Victor Ho, Hang You
Shanghai, China

Client / Manufacturer

Geberit Shanghai Investment
Shanghai, China Shanghai, China

Logistics-Return-shipping

WILDDDESIGN SHANGHAI CO. LTD.
Shanghai, China



20.) ZEUS VULCANO COVER (330-1-259266)

Category: 1.16 Bathroom

Shower tray

This is a thin, lightweight shower tray with a rigid base and soft surface. The exact form can be cut to the special measurements of the user. Being extra flat facilitates easier access to the shower. The surface is non-slip C3, but also padded to provide an extra level of safety against the risk of falls. It is therefore very suitable for children and the elderly. Its light weight makes it very easy to handle during installation, yet its surface is resistant to knocks and scratches.

Design agency

MCBATH
RIBARROJA DEL TURIA, Spain

Client / Manufacturer

MCBATH
RIBARROJA DEL TURIA, Spain RIBARROJA DEL TURIA, Spain



21.) The New Classic (330-1-259224)

Category: 1.16 Bathroom

Bathroom fittings and fixtures

A versatile, variegated concept of classic style, in which bohemian taste blends perfectly with cosmopolitan and metropolitan image, suggesting an eclectic lifestyle. This is a reinterpretation of classic style in a contemporary guise for an elegant and very timely collection. The flair and creativity of a great international designer join forces with Laufen's excellence to generate ideas for classic and contemporary, elegant and captivating bathrooms, with items ranging from washbasins to bathtubs to toilets, combined with faucets, cabinets, accessories and mirrors.

Design agency

Marcel Wanders
Amsterdam, Netherlands

Client / Manufacturer

Laufen Bathrooms AG
Laufen, Switzerland Laufen, Switzerland



22.) Artweger ZERO Walk In (330-1-259221)

Category: 1.16 Bathroom

Shower concept

Artweger ZERO is a new shower concept that makes installation and care as easy as possible. Installing the Artweger ZERO is safe and time-saving because the wall profile is glued into place. There is no need for drilling and the sealant remains intact. The sealant for the shower glass is transparent and silicone-free. This saves time and improves appearance. The customer gets a perfect-looking shower without silicone filler, which is easy to clean and maintenance free. When necessary, the sealants can be simply replaced. For a completely transparent appearance, the wall and floor profiles can be integrated into the tiling.

Design agency

Artweger GmbH. & Co. KG
Bad Ischl, Austria

Client / Manufacturer

Artweger GmbH. & Co. KG
Bad Ischl, Austria Bad Ischl, Austria

Logistics-Return-shipping

Artweger GmbH. & Co. KG
Bad Ischl, Austria



23.) Cordilleras (330-1-259198)

Category: 1.16 Bathroom

Wash basin

Cordilleras is an ultra-thin ceramic basin with minimalist geometric modeling. The superimposed ceramic soap dish can be used to place soap, cups and other small items. A water outlet is located at the front end of the dish, which ensures that no water will accumulate in the dish. The unique ultra-clean glaze layer is formed using nano-glaze technology and high temperature firing. As a result, the surface is more delicate and smooth, and easier to clean.

Design agency

Shijiazhuang Yiqi Technology Co., Ltd.
Guo Zhenliu,Zhang Mi,Chen Liqing,Lin Kai,Cai Zengyi,Xu Lujiang,Sha Chengkai
Shijiazhuang, China Jinjiang Yiqi Technology Co., Ltd.
Jinjiang, China

Client / Manufacturer

Bravat (China) GmbH
Guangzhou, China GuangZhou, China

Logistics-Return-shipping

Bravat (China) GmbH
GuangZhou, China



JODORE
Washbasin with a tray for something



JODORE
Washbasin with a tray for something

24.) Jodore (330-1-259187)

Category: 1.16 Bathroom

Wash basin

Jodore is an ultra-thin ceramic basin. It combines a pure and minimalist design with firm geometric shape and a meticulous internal structure. The basin is designed with a storage area for soap, cups and other small items. There is a water water outlet at the front of this storage area, which prevents water accumulating.

Design agency

Shijiazhuang Yiqi Technology Co., Ltd.
Zhang Mi, Lin Jie, Guo Zhenliu, Chen Liqing, Lin Kai, Cai Zengyi, Chen Jianquan, Liu Yibing
Shijiazhuang, China Jinjiang Yiqi Technology Co., Ltd.
Jinjiang, China

Client / Manufacturer

Bravat (China) GmbH
Guangzhou, China GuangZhou, China

Logistics-Return-shipping

Bravat (China) GmbH
GuangZhou, China



25.) AETHER (330-1-259134)

Category: 1.16 Bathroom

Faucet

The Aether basin faucet combines curved glass with a streamlined metal faucet body. The ultra-thin edges of the curved glass create a distinctive texture. The ergonomic ultra-thin handle feels comfortable to the touch. The Aether basin faucet is designed to enhance the overall quality of any bathroom as the gentle glass top and forward slanting lines fit almost all bathroom styles.

Design agency

Shijiazhuang Yiqi Technology Co., Ltd.
Huang Kunsong, Lin Kai, Cai Zengyi
Shijiazhuang, China Jinjiang Yiqi Technology Co., Ltd.
Jinjiang, China

Client / Manufacturer

Bravat (China) GmbH
Guangzhou, China GuangZhou, China

Logistics-Return-shipping

Bravat (China) GmbH
GuangZhou, China



26.) Reframe Collection, Toilet brush (330-1-259025)

Category: 1.16 Bathroom

Bathroom accessory

The toilet brush from Reframe Collection is a reframing of a classic design. During the development process, a lot of thought was given to hygiene. The inner plastic container has a splash guard, which extends over the outer cover and ensures that no bacteria can get in between the two. As an extra hygienic solution, the inner container is fitted with a 'tap' to make it easy to empty the container without coming into contact with bacteria. The brush head is designed to collect as little water and paper as possible, thus reducing unwanted dripping of toilet water. You can choose between a wall-mounted and a floor-standing model.

Design agency

Unidrain A / S
Kenneth Waaben
Farum, Denmark

Client / Manufacturer

Unidrain A / S
Farum, Denmark Farum, Denmark

Logistics-Return-shipping

Unidrain A/S
Farum, Denmark



27.) Reframe Collection, Corner shelf (330-1-259007)

Category: 1.16 Bathroom

Bathroom fitting

This adjustable corner shower or bath shelf is optimal for smaller bathrooms, but still offers enough space for the necessary bathroom products. It is made from reinforced steel sheet for increased stability and has thin grooves, which ensures that water does not accumulate. On the top of the shelf there is an anti-slip barrier that holds things in place when the shelf is wet. The smart suspension gives the shelf a light and almost floating expression. The suspension is also provided with an innovative feature that allows the shelf to be adapted to corners that are not exactly 90°.

Design agency

Unidrain A / S
Kenneth Waaben
Farum, Denmark

Client / Manufacturer

Unidrain A / S
Farum, Denmark Farum, Denmark

Logistics-Return-shipping

Unidrain A/S
Farum, Denmark



28.) Smart Bidet Seat (330-1-258925)

Category: 1.16 Bathroom

Bathroom fitting

Smart Bidet Seat is the first to adopt the side button to replace the traditional side panel operation that highlights and simplifies the common bidet functions. The new design brings amazing comfort, complete convenience and space-saving. Smart Bidet Seat looks quite elegant and can fit most toilets. You can adjust and set personal preference through the accompanying app.

Design agency

SHANGHAI LUYA INTELLIGENT TECHNOLOGY CO., LTD.
Aris Wang, Jerome Yu
Shanghai, China BESTTER (XIA MEN) TECHNOLOGY INC.
Zhiguo Jiang, Dexing Zhuang, Zhengdong Xu, Zhongtu Huang
Xiamen, China

Client / Manufacturer

SHANGHAI LUYA INTELLIGENT TECHNOLOGY CO., LTD.
Shanghai, China XIAMEN MOEXT INTELLIGENT TECHNOLOGY CO., LTD.
Xiamen, China Xiamen, China

Logistics-Return-shipping

XIAMEN MOEXT INTELLIGENT TECHNOLOGY CO.,LTD
Xiamen, China



29.) COWOPEL (330-1-258771)

Category: 1.16 Bathroom

Humidifier

This is a smart dehumidifier that senses the humidity of the bathroom and responds to restore optimum humidity. It is a nature-friendly system that controls moisture with water, so you can use the bathroom safely and hygienically.

Design agency

merit
Hwang In ha
Park Hyung woo
Park Byeong gwan
Daejeon Metropolitan City, Republic of Korea

Client / Manufacturer

MERIT
Daejeon Metropolitan City, Republic of Korea Daejeon Metropolitan
City, Republic of Korea



30.) Sency Vanity (330-1-258724)

Category: 1.16 Bathroom

Washstand

"Sency" is a washstand that takes technology and materials known for their performance in the automobile industry and adapts them to a household fixture. Taking full advantage of Japan's advanced expertise in sheet metal working and welding, the body does not use a single screw, and a sharp design was realized by minimizing the thickness of the worktop and the side panels. The embossed satin finishing reduces diffused reflection, giving a fine matte look as well as a forgiving feature for hiding stains.

Design agency

SANWA COMPANY Ltd.
Yoshiyuki Tada , Kojiro Serikawa
Osaka, Japan

Client / Manufacturer

SANWA COMPANY Ltd.
Osaka, Japan



31.) AXOR Showers Produktfamilie (330-1-258500)

Category: 1.16 Bathroom

Shower

The AXOR range of overhead showers has a consistently purist design language. Clear geometric forms defines the design - from the overhead shower to the shower arm and the matching thermostatic modules. The circular and rectangular design lends the bathroom space a majestic air. The finely honed and polished edges of the high-quality metal plate are its defining stylistic features, which, in combination with dynamic spray nozzles, emphasise the purist design. Enhanced with one of AXOR's 15 FinishPlus surfaces, the products achieve additional radiance.

Design agency

Phoenix Design GmbH & Co. KG
Stuttgart, Germany

Client / Manufacturer

Hansgrohe SE
Schiltach, Germany Schiltach, Germany

Logistics-Return-shipping

Hansgrohe SE
Schiltach, Germany



32.) Seamoss (330-1-258479)

Category: 1.16 Bathroom

Toilet

This shower toilet attaches great importance to hygiene. The uniquely customized water purification and filtration technology ensures that all washing water is strictly purified with KDF+ technology. The small cover plate at the back can be turned over and opened to add fragrance and replace the filter element. The intelligent induction light can adjust the three-colored lights to meet different emotional moods. It achieves a perfect combination of function and appearance.

Design agency

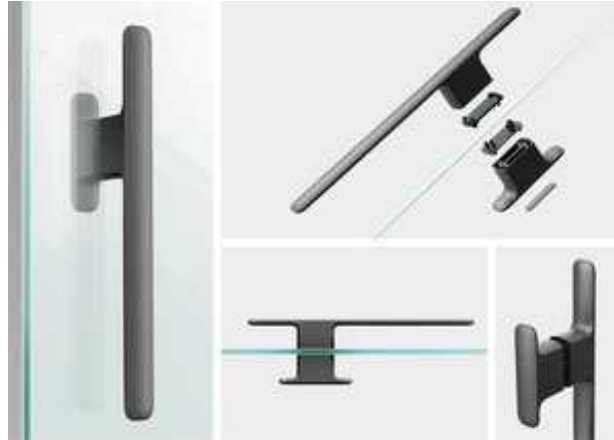
COMA Intelligent Technology Co.,Ltd
Qingbo Liu,Neng Jiang,Rizhi liu,Zhengping Wang
Taizhou, China

Client / Manufacturer

COMA Intelligent Technology Co.,Ltd
Taizhou, China Shanghai, China

Logistics-Return-shipping

VOTO Bath
Shanghai, China



33.) DT(QT) Series | Shower Enclosure Door Handle (330-1-258371)

Category: 1.16 Bathroom

Shower fitting

Timeless value and attention to detail characterize the appearance of the DT | QT handle and accessories series. Soft corner radii and spanned surfaces create a sense of well-being and harmony. The sharp-edged, revolving flank stands for precision and the highest material and production quality. In addition to the variants MONO, TWIN and MICRO, the series includes by towel-hooks and racks that create a strong bathroom aesthetic. Due to the extension of the upper handles, all handle variants can also be used as towel hooks. The screw-connections are integrated in the handle and come with a high-quality, form-fitting cover.

Design agency

Blue Sanitary Design Team Germany
Köln, Germany

Client / Manufacturer

Blue Sanitary Ware
Foshan City, Guangdong Province, China Köln, Germany



34.) Fashion Toilet Seat (330-1-258076)

Category: 1.16 Bathroom

Toilet seat

The design follows the universal D shape but in a much slimmer than usual (40 mm) form. Features include an anti-slip linear buffer, larger contact surface for greater sitting comfortable, and a choice of carbon fiber or aluminium alloy hinges. It is also easy to remove for cleaning.

Design agency

Zhejiang Hengyuan Sanitary Ware Co.
Linhai Zhejiang, China

Client / Manufacturer

Zhejiang Hengyuan Sanitary Ware Co.
Linhai Zhejiang, China Linhai Zhejiang, China

Logistics-Return-shipping

Zhejiang Hengyuan Sanitary Ware Co.,Ltd
Linhai Zhejiang, China



35.) JUE (330-1-257834)

Category: 1.16 Bathroom

Faucet

JUE is a wash basin faucet, which releases water in strong or weak flow. The product shape and name is inspired by ancient Chinese wine glasses in China (called jue). With its curves and dimensions, the JUE wash basin faucet embodies purism in design and structure. Its wide handle is ergonomically designed to provide a comfortable and effortless control experience. The precise outflow angle has been repeatedly tested to create the best user experience. JUE is made from patented brass that contains an extremely low level of lead and complies with both German and U.S. drinking water regulations.

Design agency

KAIPING EUOPEA PLUMBING APPARATUS CO., Ltd.
Liuji Chen, Ruicong Zhang, Yanlan Wu, Zhaohun Tan.
Kaiping City .G.D., China

Client / Manufacturer

KAIPING EUOPEA PLUMBING APPARATUS CO., Ltd.
Kaiping City .G.D., China shuikou town, kaiping city .G.D., China, China

Logistics-Return-shipping

KAIPING EUOPEA PLUMBING APPARATUS CO., LTD.
shuikou town, kaiping city .G.D., China, China



36.) MONOBLOCK DOUBLE DECK (330-1-257702)

Category: 1.16 Bathroom

Wash basin

Double Deck creates a contemporary and comprehensive area of use by departing from the conventional washbasin design. Double Deck allows for an effortless foot washing experience, easy access for disabled people and a safe washing area for children thanks to an integrated motion sensor.

Design agency

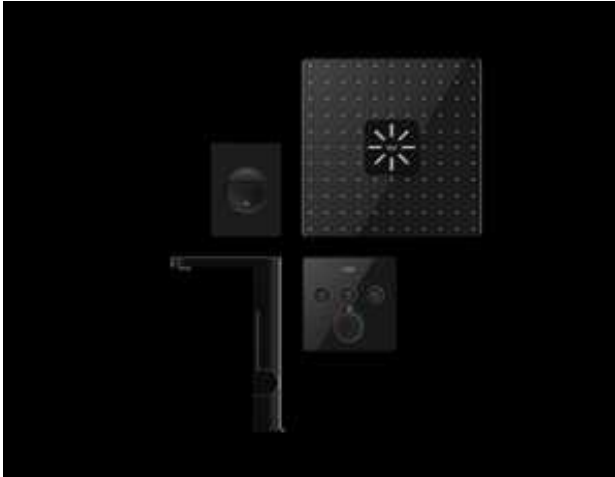
GURALVIT
Kütahya, Turkey

Client / Manufacturer

GURALVIT
Kütahya, Turkey kutahya, Turkey

Logistics-Return-shipping

Heris Seramik ve Turizm San. A.S.
kutahya, Turkey



37.) Black Line (330-1-257553)

Category: 1.16 Bathroom

Bathroom faucet

With the new «Midnight collection», GROHE has extended its range of color and material finishes to another exceptional premium option. The midnight collection is GROHE's answer to a growing demand for sophisticated color and finishes within bath and kitchen environments. Midnight matches well with both high-contrast interiors and tone-on-tone dark interiors. The custom-developed PVD (physical vapor deposition) finish ensures that the surface composition is three times harder than chrome finishes and therefore more scratch-resistant.

Design agency

Grohe AG
Düsseldorf, Germany

Client / Manufacturer

Grohe AG
Düsseldorf, Germany Düsseldorf, Germany

Logistics-Return-shipping

Grohe AG
Düsseldorf, Germany



38.) Plus L-size digital (330-1-257549)

Category: 1.16 Bathroom

Bathroom faucet

This faucet is both round and square with clear and precise detailing. While the front surface represents the architectural character, the back represents soft elegance. Plus is bold, confident and architectural. The 'arc' is the key element of this line, and represents the strongest form used in architecture. This key element features in every single detail in this range. Plus has a very purposeful design statement, digital intelligence and new consumer benefits, such as a pull-out spray head and swivel spout. Plus = smart features and a bold yet confident design statement.

Design agency

Grohe AG
Düsseldorf, Germany

Client / Manufacturer

Grohe AG
Düsseldorf, Germany Düsseldorf, Germany

Logistics-Return-shipping

Grohe AG
Düsseldorf, Germany



39.) NEXSYS (330-1-257524)

Category: 1.16 Bathroom

Shower tray

NEXSYS is a completely revolutionary concept; there is no quicker and easier way to fit a floor-level shower surface with a waste channel. NEXSYS is not simply a shower surface but rather a complete, installation-ready system that is available in a range of colours and finish options. The components are already connected and can be installed immediately - including integrated waste channel and sturdy sloping support element. The 4-in-1 system eliminates multiple installation steps.

Design agency

Franz Kaldewei GmbH & Co.KG
Inhouse Design Team
Ahlen, Germany

Client / Manufacturer

Franz Kaldewei GmbH & Co.KG
Ahlen, Germany Ahlen, Germany

Logistics-Return-shipping

Franz Kaldewei GmbH & Co KG
Ahlen, Germany



40.) Noken Porcelanosa Bathrooms (330-1-257521)

Category: 1.16 Bathroom

Bathroom faucet

Lignage is the legacy design of Noken Porcelanosa Bathrooms. It revives the memory of the traditional faucet, but with a completely updated aesthetic, perfect for the truly modern bathrooms. It speaks of luxury in all of its forms, in its textures, in its finishes, and in its different versions - single, widespread and wall-mounted widespread. These faucets fit in all bathrooms styles and systems.

Design agency

Noken Design SA
Vila-real, Spain

Client / Manufacturer

Noken Design SA
Vila-real, Spain Vila-real, Spain

Logistics-Return-shipping

Noken Design S.A.
Vila-real, Spain



41.) XT-Cabinet (330-1-257508)

Category: 1.16 Bathroom

Bathroom cabinet

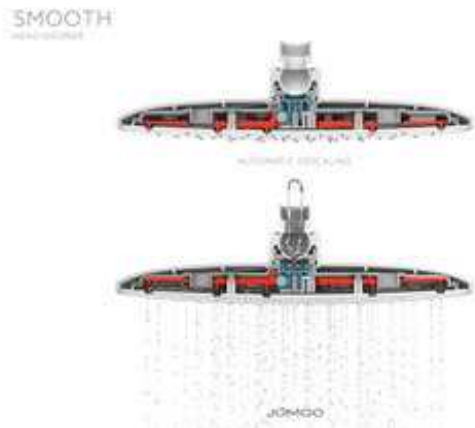
The world's first smart bathroom cabinet follows the principle that no design is the best design. AXENT has invented a recessed smart faucet, which acts as an integrated module inside the mirror cabinet. It can be controlled by sensor or by voice. The cabinet features a temperature-controlled storage area for cosmetics, intelligent dryer and sterilizer, and charging drawer. The smart mirror can also offer different lighting patterns, detect the user's skin, give health advice and to be the control center of a future smart bathroom. It is modular and available in S/M/L sizes.

Design agency

Phoenix Design GmbH + Co. KG
Stuttgart, Germany

Client / Manufacturer

AXENT Switzerland AG
Rapperswil-Jona, Switzerland Rapperswil-Jona, Switzerland



42.) SMOOTH (330-1-257481)

Category: 1.16 Bathroom

Shower

SMOOTH is a sleek shower head, equipped with an automatic descaling function. This shower head has a stylish, ultra-thin design and automatic descaling function. Each spray hole is paired with a needle that pushes any dirt out after use. While the shower is in operation these needles are automatically lifted by the water pressure and therefore do not impede water flow.

Design agency

JOMOO Kitchen & Bath Co., Ltd.
Yanping Luo, Hua Feng, Jianxiang Xiao, Zhaoping Zheng
Fujian, China

Client / Manufacturer

JOMOO Kitchen & Bath Co., Ltd.
Fujian, China Xiamen, China

Logistics-Return-shipping

JOMOO Kitchen & Bath Co., Ltd.
Xiamen, China



43.) Polaris (330-1-257473)

Category: 1.16 Bathroom

Faucet

The POLARIS faucet is designed to improve handling and installation. The patented mechanism allows for installation in perfect, vertical alignment. The generous handle is coated with a fluorescent material that makes it easier to notice and operate in dim light. Moreover, its simplified geometry and concise handle lend it an novel and individual character.

Design agency

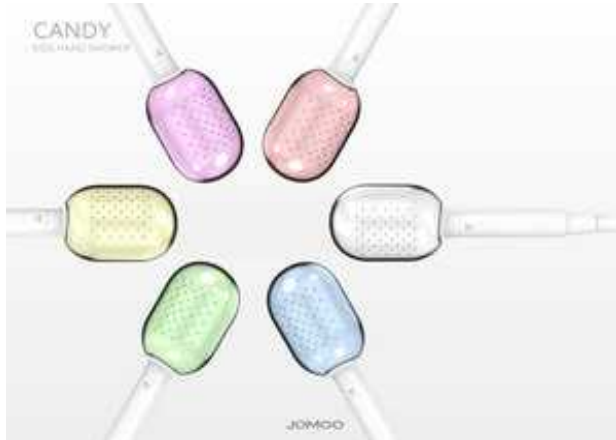
JOMOO Kitchen & Bath Co., Ltd.
Xiong Zhuang, Lichuan Wu, Faxiang Wu, Zhipeng Zheng
Fujian, China

Client / Manufacturer

JOMOO Kitchen & Bath Co., Ltd.
Fujian, China Xiamen, China

Logistics-Return-shipping

JOMOO Kitchen & Bath Co., Ltd.
Xiamen, China



44.) Candy (330-1-257462)

Category: 1.16 Bathroom

Shower fitting

CANDY aims to help children learn the joy of showering. Its proportions and soft appearance are inspired by candies and toys. The transparent shower head triggers a child's curiosity to trace the flow of water and adds an unexpected, playful character to an everyday product. Besides this, an integrated «pause» switch enables short breaks without re-adjusting the shower controller. The product comes in a selection of colourful shower heads, adding a fresh highlight to most white bathrooms. It's aimed at children aged 3-8 years and priced affordably.

Design agency

JOMOO Kitchen & Bath Co., Ltd.
Jianxiang Xiao, Xiaoming Lv, Hua Feng
Fujian, China

Client / Manufacturer

JOMOO Kitchen & Bath Co., Ltd.
Fujian, China Xiamen, China

Logistics-Return-shipping

JOMOO Kitchen & Bath Co., Ltd.
Xiamen, China



45.) Bubble (330-1-257402)

Category: 1.16 Bathroom

Valve

BUBBLE valve has a slim geometric shape and aims to make installation as easy as possible. Its texturized handle guarantees a safer grip and brings a new aesthetic compared to most other valves. But the main feature is the display function that indicates whether the valve is open or closed. The removable display inlay is filled with liquid and an encased air bubble indicates the ON/OFF status. This simple indicator offers a sense of security on first sight, especially in areas with difficult access.

Design agency

JOMOO Kitchen & Bath Co., Ltd.
Gang Chen, Faxiang Wu, Lichuan Wu, Xiaoming Lv
Fujian, China

Client / Manufacturer

JOMOO Kitchen & Bath Co., Ltd.
Fujian, China Xiamen, China

Logistics-Return-shipping

JOMOO Kitchen & Bath Co., Ltd.
Xiamen, China



46.) AXIS (330-1-257362)

Category: 1.16 Bathroom

Smart toilet

AXIS is an elegant smart toilet reduced to its essentials. Despite its minimalistic appearance, it offers a range of unique functions. The main control system is integrated in the horizontal axis including an intuitive start-stop controller and a user preference button. You can start a program (wash, dry, flush...) with just one touch and adjust parameters such as temperature and water pressure by rotation. Jomoo's patented "Tsunami" flushing system easily cleans the toilet, even under low water pressure.

Design agency

JOMOO Kitchen & Bath Co., Ltd.
Shan Lin, Hu Wang, Yuxuan Xie, Wenqiang Zheng
Fujian, China

Client / Manufacturer

JOMOO Kitchen & Bath Co., Ltd.
Fujian, China Xiamen, China

Logistics-Return-shipping

JOMOO Kitchen & Bath Co., Ltd.
Xiamen, China



47.) Rettangoro Washbowl (330-1-256742)

Category: 1.16 Bathroom

Wash basin

With its robust yet simple form, the «Rettangoro Washbowl» makes a strong first impression. The basin is made from artificial marble, which allows for an edgy form that would be impossible to attain with porcelain. The basin was designed with a minimized radius and seamless form, making it easier to maintain and clean, as well as enhancing functionality. The sharp design of the towel bar is an eye-catching feature. The design elegantly marries decorativeness and functionality, and so it fits well into any bathroom space.

Design agency

SANWA COMPANY Ltd.
Mami Murota , Kojiro Serikawa
Osaka, Japan

Client / Manufacturer

SANWA COMPANY Ltd.
Osaka, Japan Osaka, Japan

Logistics-Return-shipping

SANWA COMPANY LTD.
Osaka, Japan



48.) Viv (330-1-256457)

Category: 1.16 Bathroom

Wash basin

The Viv washbasin was designed with the idea of sustainable development in mind. Its light, natural and simple shape is inspired by spherical waves and circular geometry. The washbasin aims to promote more conscious water consumption. Viv's design leads to lower water use thanks to a shallow basin with a hollow at its center. The user is encouraged to reduce the flow of water from the faucet by observing how it gradually accumulates in the basin. In addition, Viv's light form and thin sides reduce to a minimum the mineral composite material required for its production.

Design agency

Marmite Sp. z o.o.
Marta Gebska
Poznan, Poland

Client / Manufacturer

Marmite Sp. z o.o.
Poznan, Poland Dopiewo, Poland

Logistics-Return-shipping

Marmite S.A.
Dopiewo, Poland



49.) Cranes (330-1-256449)

Category: 1.16 Bathroom

Bathroom faucet

Simple geometric modeling and thin design give this product an high-class and elegant appearance. The nozzle can rotate 90 degrees, helping to meet users' different daily needs and making life more convenient. The Tower faucet was inspired by the design of high-rise buildings.

Design agency

Rifeng Enterprise Group Co.,Ltd.
Huang jian ying, Peng jiang ming, Qu zheng bing, Yang xiao bing, Ai qing yun, Xiao dong hong
Foshan, China

Client / Manufacturer

Rifeng Enterprise Group Co.,Ltd.
Foshan, China Foshan, China

Logistics-Return-shipping

Rifeng Enterprise Group Co.,Ltd
Foshan, China



50.) Smart ring faucet (330-1-256385)

Category: 1.16 Bathroom

Bathroom faucet

This is a multifunctional intelligent ring faucet, which delivers three great features in one: a cascading and economizing water flow, ultraviolet radiation sterilization, and warm hand drying. A single gentle tap is all that's needed to activate water flow. It is similarly easy to switch to ultraviolet sterilization and hand drying modes. This product marries convenience and elegance to create a new experience in hand hygiene.

Design agency

Rifeng Enterprise Group Co.,Ltd.
Huang jian ying, Peng jiang ming, Qu zheng bing, Yang xiao bing, Ai qing yun, Xiao dong hong
Foshan, China

Client / Manufacturer

Rifeng Enterprise Group Co.,Ltd.
Foshan, China Foshan, China

Logistics-Return-shipping

Rifeng Enterprise Group Co.,Ltd
Foshan, China



51.) 2 in 1 shower set (330-1-256250)

Category: 1.16 Bathroom

Shower fitting

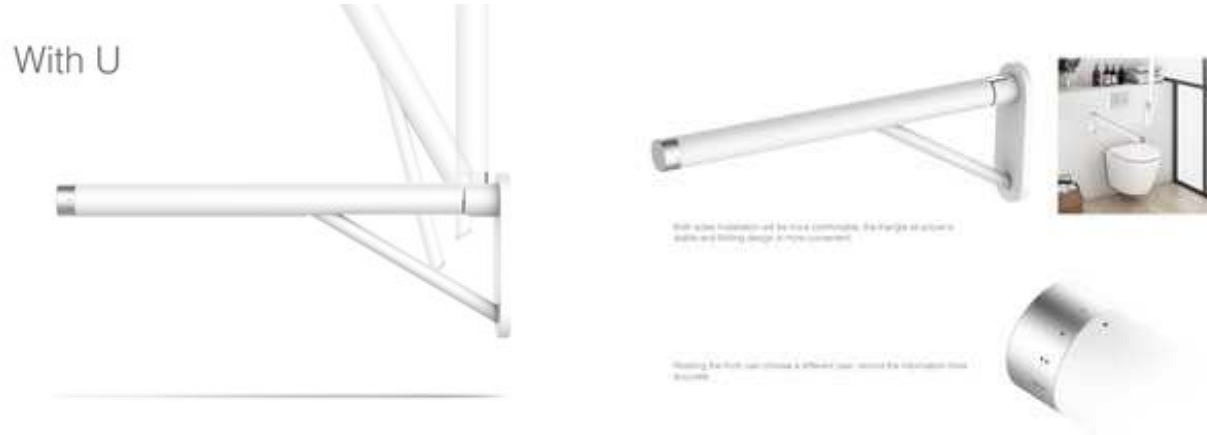
The classic cylinder design and the gradual transition from body to hose are signature elements of this shower head. It can be used as overhead shower when held horizontally on the magnetic wall bracket. A simple turning action allows the user to switch between different modes. This unique design, supporting flexible and varied ergonomics, satisfies different kinds of showering experience.

Design agency

GuangDong KaiPing Rain Shower Technology Co., Ltd.
JINSHI LIANG, RONGFU YE, YAXIONG XU, QUANFU LAI, GUIXIONG CHEN,
JIJUN FENG
Kaiping, China

Client / Manufacturer

GuangDong KaiPing Rain Shower Technology Co., Ltd.
Kaiping, China Kaiping, China



52.) With U (330-1-255883)

Category: 1.16 Bathroom

Handrail

This innovative and intelligent bathroom handrail is a convenient support for sick or elderly people. The triangular-design rail provides sturdy support to help people position themselves on the toilet and get up afterwards. The design also supports health monitoring in conjunction with a mobile app.

Design agency

Rifeng Enterprise Group Co.,Ltd.
Huang Xiaoru, Zhong Puhua, Zhan Jincui, Rao Gaozhi
Foshan, China

Client / Manufacturer

Rifeng Enterprise Group Co.,Ltd.
Foshan, China Foshan, China

Logistics-Return-shipping

Rifeng Enterprise Group Co.,Ltd
Foshan, China

Pure-Plus



53.) Pure-Plus (330-1-255877)

Category: 1.16 Bathroom

Bathroom faucet

This filter faucet provides clean drinking water without any additional water filtration equipment. It filters out tiny impurities and harmful substances such as residual chlorine and rust. The design is simple and concise and the product more affordable than most filtration systems, thus it offers the option of flowing water filtration to many families that could not otherwise afford it.

Design agency

Rifeng Enterprise Group Co.,Ltd.
Zhong Puhua, Huang Xiaoru, Wen Lelin, Zhan Jincui, Rao Gaozhi
Foshan, China

Client / Manufacturer

Rifeng Enterprise Group Co.,Ltd.
Foshan, China Foshan, China

Logistics-Return-shipping

Rifeng Enterprise Group Co.,Ltd
Foshan, China



54.) ROCA SANITARIO S.A (330-1-255832)

Category: 1.16 Bathroom

Bathroom faucet

This bathroom faucet was designed for ease of use with a single hand: push back for cold water, and forward for hot. It incorporates an aerator that limits the flow to five liters per minute. The thermostatic faucet ensures that water is immediately delivered to the desired temperature, reducing waiting time and thus saving water and energy. It also includes a number of safety features to prevent burns on chrome and scalding from overheated water (the system prevents the water temperature exceeding 38°).

Design agency

BENEDITO DESIGN
Ramón Benedito
Sant Cugat del Vallés, Spain

Client / Manufacturer

ROCA SANITARIO S.A
Barcelona, Spain Barcelona, Spain

Logistics-Return-shipping

ROCA SANITARIO S.A
Barcelona, Spain



55.) HEWI System 900 | Design and function (330-1-255448)

Category: 1.16 Bathroom

Bathroom design

System 900 helps create bathrooms that exude the deep sense of well-being associated with five-star hotels. The purist design, the use of high-quality materials and the clever functions enhance the user experience. System 900 also makes it easy to create barrier-free bathrooms. The system stands out for its functionality, durable quality, sophisticated design, clever mounting method, hygienic surfaces, and convenience and safety of use. In short, System 900 perfectly combines premium design and flawless function.

Design agency

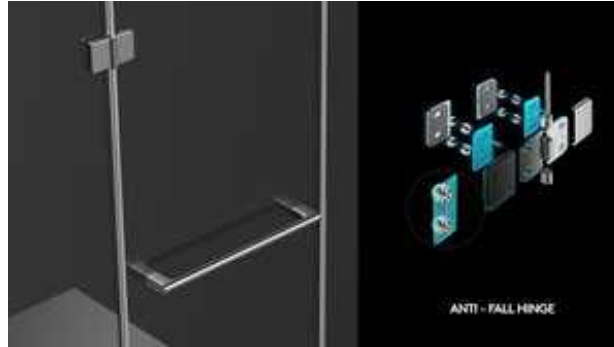
NOA GbR
Aachen, Germany

Client / Manufacturer

HEWI
Bad Arolsen, Germany Bad Arolsen, Germany

Logistics-Return-shipping

HEWI, Heinrich Wilke GmbH
Bad Arolsen, Germany



56.) DELI-RA3 Shower Enclosure (330-1-255428)

Category: 1.16 Bathroom

Shower enclosure

The Deli-RA3 shower enclosure is a reduction to the design essentials, thus making it a timeless bathroom product with a long service life. The form language, from door handle to hinges, is elegantly attuned, with technical elements like bolts located invisibly behind cover elements. The hinge direction prevents the glass from falling, while the glass is self-cleaning and integrates well into the supporting pole. The sealing strips are made of stainless steel, with TPU providing improved ageing resistance.

Design agency

PHOENIX DESIGN STUDIO
Stuttgart, Germany

Client / Manufacturer

ZHONGSHAN DELICACY SANITARY EQUIPMENT CO., LTD.
Zhongshang, Guangdong, China ZHONGSHANG, GUANGDONG, China

Logistics-Return-shipping

ZHONGSHAN DELICACY SANITARY EQUIPMENT CO., LTD
ZHONGSHANG, GUANGDONG, China



57.) FLY MINI (330-1-255077)

Category: 1.16 Bathroom

Wash basin

This deep basin with an extremely thin edge lets you make the most of the internal space. The TOWER WALL's height hides the unaesthetic plumbing. The 18cm depth offers a compact and space-saving design. All washbasins in the FLY MINI collection come in a range of more than 20 colors, including special luxury finishes in gold, platinum, bronze and copper.

Design agency

A. E T. ITALIA SRL
NOVE, Italy

Client / Manufacturer

A. E T. ITALIA SRL
NOVE, Italy NOVE, Italy

Logistics-Return-shipping

A. E T. ITALIA SRL
NOVE, Italy



58.) PEGA (330-1-255067)

Category: 1.16 Bathroom

Shower enclosure

The new Kermi PEGA shower enclosure with its wide range of hinged doors and sliding doors is impressive in every way. The handle caresses the hand. A soft, rounded design is married with exclusive technical features, such as the patented lifting and lowering of the sliding doors for greater waterproofing. PEGA exudes class and elegance with detailed features such as chrome-plated fittings and glass hook for towels. PEGA is also easy to install, offering excellent value for money and an optimal shower experience.

Design agency

Kermi GmbH
Plattling, Germany

Client / Manufacturer

Kermi GmbH
Plattling, Germany Plattling, Germany

Logistics-Return-shipping

Kermi GmbH
Plattling, Germany



59.) GM series lavatory faucet (330-1-254922)

Category: 1.16 Bathroom

Mixer faucet

This series of faucets combines traditional Japanese aesthetics with a unique and individual beauty. Elements of Japanese architecture are referenced in the flexible curved lines, and in the detail of edges and surfaces. The arc-shaped spout and handle exude a unique presence. The faucet has a universal form for ease of use, while delivering the perfect accent. The spout tip features minimal protrusions, while a new valve enables smooth handle operation. The valve performance allows more precise flow control than previous models. Supplying just the right amount of water means water savings of approx. 28%. The series features three different heights and a wide range of colors

Design agency

TOTO Ltd.
TOTO Design
Fukuoka, Japan

Client / Manufacturer

TOTO Ltd.
Fukuoka, Japan Tokyo, Japan

Logistics-Return-shipping

TOTO LTD.
Tokyo, Japan



60.) WC RP, wallhung and WASHLET(TM) RX (330-1-254914)

Category: 1.16 Bathroom

Toilet

This wall-hung WC and WASHLET(TM) RX seat are designed for a clean, minimalist bathroom. WASHLET(TM) combines a flat upper surface with gentle contours. Regular toilets can sometimes feel crude and oppressive. This slim toilet lid and rounded form offer a sense of space. The simple shape minimizes gaps and unevenness, while the neat proportions enhance cleanliness. TOTO's original CeFiONtect(TM) coating smooths the ceramic to repel dirt, which is then washed away with the Tornado flushing system. This product eliminates clutter for a sophisticated lifestyle.

Design agency

TOTO Ltd.
Hiroataka Nakabayashi, Tomohiro Miyazaki, Minoru Tani
Fukuoka, Japan

Client / Manufacturer

TOTO Ltd.
Fukuoka, Japan Tokyo, Japan

Logistics-Return-shipping

TOTO LTD.
Tokyo, Japan



61.) NEOREST AH/RH (330-1-254913)

Category: 1.16 Bathroom

Toilet

NEOREST AH/RH offers everything: comfort, hygiene, cleverness and beauty. The AH has a simple linear design, blending perfectly with modern spaces. Gentle curves suggest rest and relaxation. The toilet cleans itself, sanitizing and deodorizing the bowl surface and nozzle. TOTO's original CeFiONtect(TM) coating smooths the ceramic to prevent dirt from sticking. The unique rimless shape and Tornado flushing method enhance hygiene. A pump-type tank and direct tap pressure flushing produce an eco-friendly 3.8L flush. Fusing design with function, this toilet is perfect for a beautiful bathroom.

Design agency

TOTO Ltd.
Hirotaka Nakabayashi, Yuji Yoshioka, Minoru Tani
Fukuoka, Japan

Client / Manufacturer

TOTO Ltd.
Fukuoka, Japan Tokyo, Japan

Logistics-Return-shipping

TOTO LTD.
Tokyo, Japan



62.) CERAMIC TOP (330-1-254839)

Category: 1.16 Bathroom

Wash basin

Ceramic Top is an important typological innovation; it is a self-supporting top, 100 x 54 cm in size, where washbasins can be installed on the left, right or in the middle. Bathroom ceramics, compared to other materials (like marble, wood, plastic laminate, etc.), guarantee higher levels of hygiene. Thanks to a careful structural study of plane and section, Catalano Ceramic Top allows a direct installation on the wall, without supporting structures, and it is able to support the weight of sit-on washbasins. Under the top, it is possible to install furniture, structures and towel rails.

Design agency

CDC Corporate Design Catalano
Fabrika di Roma, Italy

Client / Manufacturer

Ceramica Catalano S. p. A.
Fabrika di Roma Vt, Italy Fabrika di Roma, Italy

Logistics-Return-shipping

Ceramica Catalano S.p.A
Fabrika di Roma, Italy



63.) Orbis collection (330-1-254751)

Category: 1.16 Bathroom

Wash basin

ORBIS is a family of basins that pays homage to water and the wellness activities we practice with it. The accuracy in form and color, combined with an exclusive feel of touch is only made possible by the material AREUM, developed specifically for the high-end market. The shapes of the ORBIS family convey a Zen-like impression of calm and silence.

Design agency

INODA+SVEJE
Italy, Italy

Client / Manufacturer

Saturnbath Co., Ltd.
Seoul, Republic of Korea Seoul, Republic of Korea

Logistics-Return-shipping

Saturnbath Co.,Ltd
Seoul, Republic of Korea



64.) Assem collection (330-1-254750)

Category: 1.16 Bathroom

Bathroom fixtures

The ASSEM Collection is a new modular bathroom collection that creates a variety of object expressions with different element combinations. This modular system can overcome limitations of interior space by simply deviating from the fixed object type, and enables various styles to be freely produced according to the user's preference. The design theme of this collection is a combination of elegance, simplicity, classic and modern design in a luxury finish.

Design agency

SY DESIGN
Gyeonggi-do, Republic of Korea

Client / Manufacturer

Saturnbath Co., Ltd.
Seoul, Republic of Korea Seoul, Republic of Korea

Logistics-Return-shipping

Saturnbath Co.,Ltd
Seoul, Republic of Korea



65.) Geberit AquaClean Sela (330-1-254621)

Category: 1.16 Bathroom

Toilet

With the new AquaClean Sela, Geberit is adding an elegant shower toilet to the AquaClean product family. With its timeless, purist, flat design and clear design language, this toilet fits into any bathroom. Equipped with innovative technology, the AquaClean Sela embodies the highest quality standards. The extremely simple and intuitive functions include the patented WhirlSpray shower technology, the rimless WC ceramic, the very quiet and thorough TurboFlush flushing technology and an orientation light for nighttime. The connections and intelligent technology are aesthetically integrated into the ceramic.

Design agency

Christoph Behling Design Ltd.
London, United Kingdom

Client / Manufacturer

Geberit International AG
Jona, Switzerland Jona, Switzerland



66.) Stages Accessory (330-1-254014)

Category: 1.16 Bathroom

Bathroom accessory

Versatility is the centerpiece of Kohler's Stages Accessories, an organization system that enables customization and empowers contemporary living. Over a dozen modules - ranging from shelving frames to boxes to trays - and a diverse array of finishes create myriad combinations to suit distinct lifestyles and habits. Freedom shapes this modular system, in both form and function. While conforming to Kohler's design signature, the modules extend beyond the bathroom and kitchen for use in the bedroom or living room - breaking free from previously conceived boundaries of space.

Design agency

Kohler Design Studio
Shanghai, China

Client / Manufacturer

Kohler Design Studio
Shanghai, China Shanghai, China



67.) XSquare (330-1-253998)

Category: 1.16 Bathroom

Bathroom furniture series

In conjunction with Kurt Merki Jr., Duravit has created a furniture range that is especially attuned to the design of the DuraSquare washbasins. The striking feature is the quadrant-shaped chrome profile edging the furniture. On the floor-standing model, the transition to the leg frame is absolutely seamless. The chrome profile accentuates the edges of both variants. It continues the corner radius of the washbasin, creating harmony and a striking sense of independence.

Design agency

studio KMJ GmbH
Zürich, Switzerland

Client / Manufacturer

Duravit AG
Hornberg, Germany Hornberg, Germany

Logistics-Return-shipping

Duravit AG
Hornberg, Germany



68.) Mi Automatic Soap Dispenser (330-1-251387)

Category: 1.16 Bathroom

Soap dispenser

Mi Automatic Soap Dispenser is a touch-free soap dispensing mechanism. Equipped with near-field infrared sensor technology, it detects users' hands under the dispenser instantly and releases the perfect amount of soap automatically. Its micro-foam pump offers rich, thick lather for a luxurious hand-washing experience. As a compact, attractive, hygienic, space-saving hand-washing solution, it goes well with any bathroom or kitchen décor. A manual hand soap pump typically yields 2g for each pump, which requires 10 seconds to rinse off. Mi dispenser yields just 0.8g, which needs just 5 seconds, saving 60% hand sanitizer and 50% water while achieving the same effect.

Design agency

Xiaomi Inc.
Mengling You, Ningning Li, Yinig Shen (Industrial Design Team of Mi Ecosystem)
Beijing, China

Client / Manufacturer

Shanghai Xiaoji Internet Technology Co., Ltd.
Shanghai, China Beijing, China

Logistics-Return-shipping

Xiaomi Inc.
Beijing, China



69.) The Liner (330-1-250670)

Category: 1.16 Bathroom

Outdoor faucet

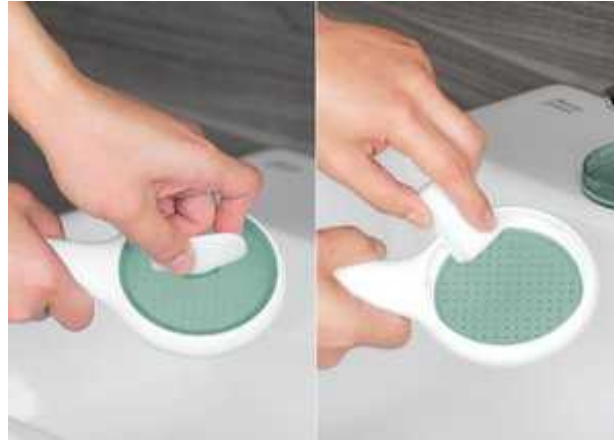
The Liner is a faucet designed for outdoor usage. The double 45-degree-angle design ensures a comfortable feeling and usability. Also, it features a water rectifier that can help smooth the water. The design is minimal and the color is textured with matte black to give the whole body an oriental look and feel. The Liner is not just a faucet but a decorative element.

Design agency

Liang-Ping Sanitary Facility Co., Ltd.
Hsi-Liang Chen
Changhua Hsien, Taiwan

Client / Manufacturer

Liang-Ping Sanitary Facility Co., Ltd.
Changhua Hsien, Taiwan Chang-Hua Hsien, Taiwan



70.) GENIE (330-1-250156)

Category: 1.16 Bathroom

Shower fitting

Many people around the world face low water pressure conditions, which reduces their ability to enjoy the soothing effects of showering. The inside cavity and micro-perforated spray face were engineered to boost water flow and save several liters per minute. The transparent front and back parts let users see inside and know when to maintain the product. The back features a simple and universal opening system so it can be easily removed to clean the inside.

Design agency

American Standard
American Standard In-House Design Team
Singapore, Singapore

Client / Manufacturer

American Standard
Singapore, Singapore LadPrao, Thailand

Logistics-Return-shipping

American Standard
LadPrao, Thailand



71.) Blind Control Toilet (330-1-249958)

Category: 1.16 Bathroom

Toilet accessory

Through this attachment, an ordinary toilet seat can be upgraded to a shower toilet. Users can adjust the mode without turning and looking at the operating panel. After learning how to operate it, users can set the position of the bibcock and the sprinkling intensity without turning around. The long and thin design of the handle allows it to be installed in a smaller toilet. The seamless flipping design makes it easier to clean.

Design agency

GD Midea Environment Appliances MFG
Yuqiang Guo, Ying Tong
Foshan.Guangdong, China

Client / Manufacturer

GD Midea Environment Appliances MFG
Foshan.Guangdong, China Foshan.Guangdong, China



72.) JUSTIME Pan 2 Wall-Mounted Basin Mixer (330-1-249896)

Category: 1.16 Bathroom

Mixer faucet

The Pan 2 faucets have a concise style, with integrated rectangular and circular lines designed to fit different basins easily and provide users with a variety of choices. Though they use the most basic geometric elements, the faucets have a unique look and enhance any bathroom, as expressed in the name ('pan' = all).

Design agency

JUSTIME Team of Shengtai Brassware
Chang Hua, Taiwan

Client / Manufacturer

Shengtai Brassware Co., Ltd.
Chang Hua, Taiwan Chang Hua, Taiwan

Logistics-Return-shipping

Shengtai Brassware Co., Ltd
Chang Hua, Taiwan



73.) JUSTIME Pan 2 Two-Handle Basin Faucet (330-1-249775)

Category: 1.16 Bathroom

Mixer faucet

The Pan 2 faucets have a concise style, with integrated rectangular and circular lines designed to fit different basins easily and provide users with a variety of choices. Though they use the most basic geometric elements, the faucets have a unique look and enhance any bathroom, as expressed in the name ('pan' = all).

Design agency

JUSTIME Team of Shengtai Brassware
Chang Hua, Taiwan

Client / Manufacturer

Shengtai Brassware Co., Ltd.
Chang Hua, Taiwan Chang Hua, Taiwan

Logistics-Return-shipping

Shengtai Brassware Co., Ltd
Chang Hua, Taiwan



74.) JUSTIME Arch 2 Basin Faucet (330-1-249742)

Category: 1.16 Bathroom

Mixer faucet

According to an ancient Chinese proverb, square implies honesty, round implies intelligence, and a combination of both means wisdom. The Arch 2 Basin Faucet elegantly marries square and round geometries in a perfect interpretation of ancient wisdom and modern style. The handles have been designed with straight and curved lines which creates an asymmetry that is eye-catching and intriguing.

Design agency

JUSTIME Team of Shengtai Brassware
Chang Hua, Taiwan

Client / Manufacturer

Shengtai Brassware Co., Ltd.
Chang Hua, Taiwan Chang Hua, Taiwan

Logistics-Return-shipping

Shengtai Brassware Co., Ltd
Chang Hua, Taiwan



75.) JUSTIME Lucky 7 Basin Set (330-1-249723)

Category: 1.16 Bathroom

Basin and faucet

Every plant grows from a seed, and therefore each budding seed is a symbol of hope and happiness. The faucets of the «Lucky 7» set resemble stalks sprouting from the basin. The succinct pillared shape of the basin and the simplified lines of the spout and handle not only create a concise and elegant aesthetic but also decrease time and cost of production. Stick Handle was designed to operate easily in wet or slippery conditions.

Design agency

JUSTIME Team of Shengtai Brassware
Chang Hua, Taiwan

Client / Manufacturer

Shengtai Brassware Co., Ltd.
Chang Hua, Taiwan Chang Hua, Taiwan

Logistics-Return-shipping

Shengtai Brassware Co., Ltd
Chang Hua, Taiwan



76.) JUSTIME Chapter Basin Set (330-1-249719)

Category: 1.16 Bathroom

Basin and faucet

Water is a necessity of life. Chapter faucets combine Western and Eastern design concepts, creating simple and beautiful products which herald a brand-new era of water containers. Chapter Basin Set is a creative design combining basin and faucet. The basin resembles a well with the faucet designed to mimic a windlass. Contemporary lines and sensor valves give the product a more contemporary feel to balance the traditional aesthetics.

Design agency

JUSTIME Team of Shengtai Brassware
Chang Hua, Taiwan

Client / Manufacturer

Shengtai Brassware Co., Ltd.
Chang Hua, Taiwan Chang Hua, Taiwan

Logistics-Return-shipping

Shengtai Brassware Co., Ltd
Chang Hua, Taiwan



77.) F4 (330-1-249606)

Category: 1.16 Bathroom

Smart Toilet

F4 is an integrated intelligent toilet with a soft LED light source to provide warm light. Thanks to microwave sensors, it automatically detects human presence to turn on the night light and LED lighting. The product contains a hidden low water tank with water pump, which solves the typical problem of requiring water height difference or water pressure to flush. This innovative new flushing method is perfectly suited to low water pressure environments.

Design agency

FOSHAN CITY FAENZA SANITARY WARE CO
Yishan Jiang, Wanzhu Mo, Jun He
FOSHAN, China

Client / Manufacturer

FOSHAN CITY FAENZA SANITARY WARE CO
FOSHAN, China FOSHAN, China

Logistics-Return-shipping

FOSHAN CITY FAENZA SANITARY WARE CO.,LTD
FOSHAN, China



78.) Philips Hue Adore (330-1-249579)

Category: 1.16 Bathroom

Bathroom mirror

The Philips Hue Adore bathroom mirror transforms the bathroom to help people energize, concentrate or relax. The perfect fit for any bathroom, it provides the right light for every moment of the day. Its integrated, adjustable light is designed to create the best lighting conditions without any unwanted shadows. Made from high-quality materials, the mirror is specifically designed for the humid conditions of bathrooms and had been rigorously tested to ensure water resistance.

Design agency

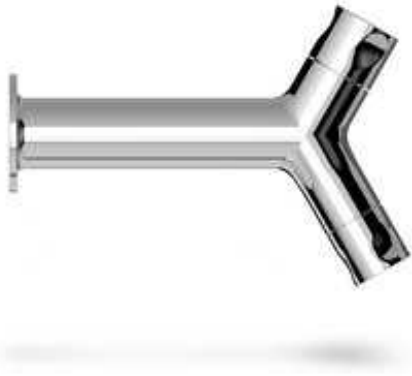
Philips Design
Eindhoven, Netherlands Signify Design Team
Eindhoven, Netherlands

Client / Manufacturer

Philips
Eindhoven, Netherlands Signify
Eindhoven, Netherlands Eindhoven, Netherlands

Logistics-Return-shipping

Philips Design
Eindhoven, Netherlands



79.) JUSTIME Yes 2 Basin Mixer (330-1-249436)

Category: 1.16 Bathroom

Mixer faucet

Yes 2 was developed with a module inlet structure to simplify the built-in valve and place the cartridge outside of the wall to increase the convenience of replacement and maintenance. Cylindrical handles were machined to be operated easily. The user only needs to operate the lower control handle after regulating water temperature using the upper handle.

Design agency

JUSTIME Team of Shengtai Brassware
Chang Hua, Taiwan

Client / Manufacturer

Shengtai Brassware Co., Ltd.
Chang Hua, Taiwan Chang Hua, Taiwan

Logistics-Return-shipping

Shengtai Brassware Co., Ltd
Chang Hua, Taiwan



80.) Electricity generating toilet remote controller (330-1-249422)

Category: 1.16 Bathroom

Toilet remote control

This remote controller for automatic toilets generates its own power from the force used to press buttons, making an external electrical supply unnecessary. It does not require batteries either, which saves those responsible for toilet maintenance the trouble of periodic checks and replacement. Plus, there are no batteries to discard, which is good for the environment. While reducing the load placed on the environment and toilet caretakers, this remote controller has been carefully designed so that the buttons can be operated with the same force and stroke as ordinary controllers.

Design agency

LIXIL Corporation
Daisuke Matsumoto
Tokyo, Japan

Client / Manufacturer

LIXIL Corporation
Tokyo, Japan Aichi, Japan

Logistics-Return-shipping

LIXIL Corporation
Aichi, Japan



81.) Sound Decorator (330-1-249411)

Category: 1.16 Bathroom

Sound masker

This is a wall-mounted acoustic masking unit that protects the privacy of users at public toilets in stations, buildings, schools, hotels, and elsewhere. Japanese people have a habit of flushing toilets many times to mask noise. This product has contributed to water saving by making a loud flushing sound without emitting water. This new product also increases the masking effect by adjusting the frequency band to the toilet ambiance. Since many people use the toilet, the device is designed to be fully operated without touching. Set horizontally, it blends into the toilet space.

Design agency

LIXIL Corporation
Ryosuke Tsuchiya
Tokyo, Japan

Client / Manufacturer

LIXIL Corporation
Tokyo, Japan Aichi, Japan

Logistics-Return-shipping

LIXIL Corporation
Aichi, Japan



82.) PLURAL BATHROOM COLLECTION (330-1-249148)

Category: 1.16 Bathroom

Bathroom fittings

Designed by Terri Pecora with a vintage living room feeling, PLURAL creates a place to spend time in and share with others. The feeling of lightness comes from the light airy furniture creatively embedded into the bathroom space. PLURAL redefines the bathroom space, offering an environment for socializing. All interrelated items have a wide selection of size options, harmonious designs and color varieties in a sophisticated combination of massive wood and ceramics. PLURAL introduces a subtle palette of colors and materials into the bathroom space to break away from conventional imagery.

Design agency

Studio Terri Pecora
Terri Pecora
Milan, Italy

Client / Manufacturer

ECZACIBASI BUILDING PRODUCTS
Bilecik, Turkey ISTANBUL, Turkey

Logistics-Return-shipping

ECZACIBASI
ISTANBUL, Turkey



83.) Paper Holder (330-1-249080)

Category: 1.16 Bathroom

Bathroom paper holder

Paper Holer provides a safe and convenient place to store a cellphone while using the bathroom. In addition to cellphones, the Paper Holder can accommodate larger tablets. It folds flat to the wall when not in use. The cover on the front of the tissue protects the tissues from humidity and allows the user to easily change the tissues with one hand.

Design agency

DAEWOO E & C Co.
HO JONG BEOM, PARK JAE WOO, SON JUNG WOO, LEE YOUNG SOO
Seoul, Republic of Korea

Client / Manufacturer

JIMMYING HOME BATH CO.,LTD
Seoul, Republic of Korea Seoul, Republic of Korea



84.) Smartmi Electronic Bidet (330-1-248964)

Category: 1.16 Bathroom

Electronic bidet

This bidet features sensibly and intuitively organized control panel with buttons located based on frequency of use for comfortable control. The LEDs are separately recessed so it is very easy for the user to monitor usage at a glance. The connection between the control panel and the seat is lightweight and thin yet strong. All surfaces are designed to be as flat and smooth as possible to make cleaning as easy as possible.

Design agency

SMARTMI Limited
Beijing, China

Client / Manufacturer

SMARTMI Limited
Beijing, China Beijing, China

Logistics-Return-shipping

SMARTMI Limited
Beijing, China



85.) Frame Collection (330-1-248626)

Category: 1.16 Bathroom

Bathroom accessories

The Frame Collection provides solutions for small spaces. Most products cleverly combine appropriate functions, reducing installation time significantly. With just 2-4 screws, each accessory can be elegantly mounted with a concealed fixing. The removable inlays out of high-quality ABS are easy to maintain, recyclable, color-stabilized and equipped with rubber pushers to prevent trembling when used, for example, on cruise ships.

Design agency

Coram
Design Lab
The, Netherlands

Client / Manufacturer

Geesa / Coram
The, Netherlands Amersfoort, Netherlands

Logistics-Return-shipping

Geesa BV
Amersfoort, Netherlands



86.) Q Light (330-1-248502)

Category: 1.16 Bathroom

Toilet with bidet

When a user approaches the toilet, it slowly brightens up with warm lighting. The control knob is intuitive and easy-to-use, even for children and the elderly. The sensory remote control can be adjusted to meet the user's individualized needs. The fresh water is heated instantaneously to keep the temperature constant, thereby ensuring safety and hygiene. Swirling water flushing technology enhances water performance while a flush of just 4.8L means this toilet is also kind to the environment.

Design agency

Shanghai Hegii Co., Ltd.
HEGII Design Studio
Shanghai, China

Client / Manufacturer

Shanghai Hegii Co., Ltd.
Shanghai, China Shanghai, China

Logistics-Return-shipping

Shanghai Hegii Co., Ltd.
Shanghai, China



87.) Slim Sign Faucet (330-1-248003)

Category: 1.16 Bathroom

Faucet

This faucet design drew inspiration from road signage. The figurative art, the combination of slim column body and ultra-thin square spout gives it a simple and clean aesthetic. The paralleled handle and spout look dynamic even in the static state with a normal hot and cold water function. An ultra-thin aerator is used to produce a flat water flow and to save water. The material SS304 is long lasting and the brush-finished PVD coating rounds off an exquisite and stunning design.

Design agency

Primy Corporation Ltd.
Chief designers: Xiangwei Zhong
Venkat Tirunagaru
Zhuhai, China

Client / Manufacturer

Primy Corporation Ltd.
Zhuhai, China Saltsjoboo, Sweden

Logistics-Return-shipping

Tirunagaru Venkateswarlu
Saltsjoboo, Sweden



88.) Mix&Match (330-1-247739)

Category: 1.16 Bathroom

Faucet

By idealizing Mix&Match, DOCOL invests in a trend that is growing in architecture: total freedom of choice and the possibility of creating personalized projects that reflect the essence of those who inhabit a place. All the elements can be purchased separately and matched according to individual taste. There are four different sizes of basin spouts (small, medium, large and extra-large) and one wall version that, associated with various activation possibilities, guarantee complete freedom of composition.

Design agency

Docol Metais Sanitários Ltda
Baba Vacaro, Marcelo Alves, Thaís Alves do Rosário Hostin
Joinville, Brazil

Client / Manufacturer

Docol Metais Sanitários Ltda.
Joinville, Brazil JOINVILLE, Brazil



89.) HMF 111-111 Mixer (330-1-246810)

Category: 1.16 Bathroom

Faucet

Following the design concept of ultimate simplicity, and using the most reasonable dimensional space to develop and integrate flow and temperature regulation, this product reflects craftsmanship and artistic spirit. It uses an auto-clean aerator to ensure even water flow. The temperature adjustment knob is separated from the opening button, which reduces the adjustment time, saving energy and water. Simply by pushing the opening button, the user can enjoy the exact same temperature as last time.

Design agency

Shanghai Hegii Co., Ltd.
HEGII DESIGN STUDIO
Shanghai, China

Client / Manufacturer

Shanghai Hegii Co., Ltd.
Shanghai, China Shanghai, China

Logistics-Return-shipping

Shanghai Hegii Co., Ltd.
Shanghai, China